



Steel-sheet distribution boxes

T-BOX



Validity from: 22.11.2024

www.sez-krompachy.sk



Introduction

About the company

SEZKrompachy,a.s.,with a 75-year tradition, is a reliable manufacturer of complex low and high-voltage electrical devices used for circuit protection and control,including protection against electric current accidents.

The company has its own manufacturing capacities,which include modern technologies for the production of metal components, plastic parts,molds and tools,as well as surface treatment,welding and assembly technologies.

With its own development capacities,an in-house testing laboratory, and cooperation with universities, the company has the potential for continuous product innovation to meet customer needs and comply with international standards.

The sale of products both domestically and internationally is supported by certificates from independent accredited testing laboratories in Slovakia, the Czech Republic, England, Ukraine, and Germany. The company holds the EN ISO 9001:2015 quality management system certificate and the EN ISO 14001:2015 certificate. Additionally, the company holds certificates for products according to UL 1077 and UL 508 standards, as well as VDE, CCA, and CCB certificates.

Our Motto

Over the years, SEZ has been known as a supplier of low-cost, acceptable-quality products. Our new motto is: "SEZ is a manufacturer of quality equipment at a fair price."

Market position

Over the past few years, the company has managed to build on the successes achieved in the field of electrical engineering in the '80s and '90s and gradually regain its position in the domestic market, in the Czech Republic, and in other European and world markets. With a balanced distribution of export activities, it was possible to largely eliminate the consequences of local economic crises and the activities of competitors, thereby ensuring the stability of the company as a whole.



Distribution Board Features



Heavy Duty Distribution Boards – 450mm width DB(18Modules/ Row)



- ▶ HeavyDuty Distribution Board is a fully welded construction
- ▶ Door gasket - Cast-In-Situ ,seamless PUgasket
- ▶ Door hinges - Aluminium die-cast heavyduty hinges
- ▶ Door lock - Doublebit quarter turn lock
- ▶ Lock cam - Steel cam for durability
- ▶ Earth stud on the door and cabin
- ▶ DINfront plates are separate modular plates for easyremoval
- ▶ Top & bottom gland plates are recessed and with PUseamless gasket
- ▶ No screws are visible from outside of the gland plate
- ▶ Backside with ribs for extra strength
- ▶ Flush frame comes with a plastic lock handle

Order Number	Description	No of Rows	No of Modules / Row	Dimensions (WxHxD)mm	Mounting Type	Thickness (mm)	Neutral Bar	Earth Bar
760 106	HeavyDuty Distribution Boards	1 Rows x 18Ways	(18Modules/Row)	450X250X125	Surface	1.0mm	18 Ways	9 Ways
760 126	HeavyDuty Distribution Boards	2 Rows x 18Ways	(18Modules/Row)	450X400X125	Surface	1.0mm	36 Ways	18 Ways
760 146	HeavyDuty Distribution Boards	3 Rows x 18Ways	(18Modules/Row)	450X600X125	Surface	1.2mm	54 Ways	27 Ways
760 166	HeavyDuty Distribution Boards	4 Rows x 18Ways	(18Modules/Row)	450X750X125	Surface	1.2mm	72 Ways	36 Ways
760 170	HeavyDuty Distribution Boards	5 Rows x 18Ways	(18Modules/Row)	450X900X130	Surface	1.2mm	90 Ways	45 Ways
760 171	HeavyDuty Distribution Boards	6 Rows x 18Ways	(18Modules/Row)	450X1050X130	Surface	1.2mm	108 Ways	54 Ways
760 172	HeavyDuty Distribution Boards	7 Rows x 18Ways	(18Modules/Row)	450X1250X130	Surface	1.2mm	126 Ways	63 Ways
760 173	HeavyDuty Distribution Boards	8 Rows x 18Ways	(18Modules/Row)	450X1400X130	Surface	1.2mm	144 Ways	72 Ways
760 174	HeavyDuty Distribution Boards	9 Rows x 18Ways	(18Modules/Row)	450X1550X130	Surface	1.2mm	162 Ways	81Ways
760 175	HeavyDuty Distribution Boards	10 Rows x 18Ways	(18Modules/Row)	450X1750X130	Surface	1.2mm	180 Ways	90 Ways
724585	Flush Frame- for HDDistribution Boards	1 Rows x 18Ways		450X250		1.2mm		
724586	Flush Frame- for HDDistribution Boards	2 Rows x 18Ways		450X400		1.2mm		
724587	Flush Frame- for HDDistribution Boards	3 Rows x 18Ways		450X600		1.2mm		
724588	Flush Frame- for HDDistribution Boards	4 Rows x 18Ways		450X750		1.2mm		
724589	Flush Frame- for HDDistribution Boards	5 Rows x 18Ways		450X900		1.2mm		
724591	Flush Frame- for HDDistribution Boards	6 Rows x 18Ways		450X1050		1.2mm		
724592	Flush Frame- for HDDistribution Boards	7 Rows x 18Ways		450X1250		1.2mm		
724593	Flush Frame- for HDDistribution Boards	8 Rows x 18Ways		450X1400		1.2mm		
724594	Flush Frame- for HDDistribution Boards	9 Rows x 18Ways		450X1550		1.2mm		
724595	Flush Frame- for HDDistribution Boards	10 Rows x 18Ways		450X1750		1.2mm		

Notes

Neutral links - Insulated Neutral links

Color: White RAL9010, or RAL9003 or any other color as customer request (subject to MOQ)

Testing

- ▶ IP65 tested at UKASaccredited test lab in the UK
- ▶ 200hrs salt spray tested at UKASaccredited test lab in the UK
- ▶ IK08 impact test, tested at UKASaccredited test lab in the UK

(Please contact us for latest testing and certificates)



Heavy Duty Distribution Boards – 600mm width DB(24 Modules / Row)



- ▶ HeavyDuty Distribution Board is a fully welded construction
- ▶ Door gasket - Cast-In-Situ ,seamless PUGasket
- ▶ Door hinges - Aluminium die-cast heavyduty hinges
- ▶ Door lock - Doublebit quarter turn lock
- ▶ Lock cam - Steel cam for durability
- ▶ Earth stud on the door and cabin
- ▶ DINfront plates are separate modular plates for easyremoval
- ▶ Top & bottom gland plates are recessed and with PUseamless gasket
- ▶ No screws are visible from outside of the gland plate
- ▶ Backside with ribs for extra strength
- ▶ Flush frame comes with a plastic lock handle

Order Number	Description	No of Rows	No of Modules / Row	Dimensions (WxHxD)mm	Mounting Type	Thickness (mm)	Neutral Bar	Earth Bar
760 200	HeavyDuty Distribution Boards	2 Rowsx 24 Ways	(24 Modules/Row)	600X400X125	Surface	1.2mm	48 Ways	24 Ways
760 201	HeavyDuty Distribution Boards	3 Rowsx 24 Ways	(24 Modules/Row)	600X600X125	Surface	1.2mm	72 Ways	36 Ways
760 202	HeavyDuty Distribution Boards	4 Rowsx 24 Ways	(24 Modules/Row)	600X750X125	Surface	1.2mm	96 Ways	48 Ways
760 203	HeavyDuty Distribution Boards	5 Rowsx 24 Ways	(24 Modules/Row)	600X900X130	Surface	1.2mm	120 Ways	60 Ways
760 204	HeavyDuty Distribution Boards	6 Rows x 24 Ways	(24 Modules/Row)	600X1050X130	Surface	1.2mm	144 Ways	72 Ways
760 205	HeavyDuty Distribution Boards	7 Rows x 24 Ways	(24 Modules/Row)	600X1250X130	Surface	1.2mm	168 Ways	84 Ways
760 206	HeavyDuty Distribution Boards	8 Rowsx 24 Ways	(24 Modules/Row)	600X1400X130	Surface	1.2mm	192 Ways	96 Ways
760 207	HeavyDuty Distribution Boards	9 Rows x 24 Ways	(24 Modules/Row)	600X1550X130	Surface	1.2mm	216 Ways	108 Ways
760 208	HeavyDuty Distribution Boards	10Rows x 24 Ways	(24 Modules/Row)	600X1750X130	Surface	1.2mm	240 Ways	120 Ways
724560	Flush Frame- for HDDistribution Boards	2 Rowsx 24 Ways		600X400		1.2mm		
724564	Flush Frame- for HDDistribution Boards	3 Rowsx 24 Ways		600X600		1.2mm		
724567	Flush Frame- for HDDistribution Boards	4 Rowsx 24 Ways		600X750		1.2mm		
724569	Flush Frame- for HDDistribution Boards	5 Rowsx 24 Ways		600X900		1.2mm		
724 571	Flush Frame- for HDDistribution Boards	6 Rowsx 24 Ways		600X1050		1.2mm		
724572	Flush Frame- for HDDistribution Boards	7Rows x24 Ways		600X1250		1.2mm		
724 597	Flush Frame- for HDDistribution Boards	8 Rowsx 24 Ways		600X1400		1.2mm		
724 598	Flush Frame- for HDDistribution Boards	9 Rowsx 24 Ways		600X1550		1.2mm		
724599	Flush Frame- for HDDistribution Boards	10Rowsx 24 Ways		600X1750		1.2mm		

Notes

Neutral links - Insulated Neutral links

Color: White RAL9010,or RAL9003 or any other color as customer request (subject to MOQ)

Testing

- ▶ IP65 tested at UKASaccredited test lab in the UK
- ▶ 200hrs salt spray tested at UKASaccredited test lab in the UK
- ▶ IK08 impact test, tested at UKASaccredited test lab in the UK

(Pleasecontactus for latest testing and certificates)



Ceriticates

Distribution Boards Test Certificates



IP65, tested at UKAS
accredited test lab in the UK



Impact test,for IKO8tested at
UKASaccredited test lab in the UK



Salt spray tested for 200hrs at
UKASaccredited test lab in the UK



RoHS Certificate of Compliance



CE
Certificate of Compliance



IEC Certificate of Compliance



ISO9001
Quality Management Certified
from DNV

We continuously do R&D and testing of our products.
Please contact us for latest testing details and test certificates.

Technical Specifications

Technical Specifications of SEZ Distribution Boards

Standards:

Designed and manufactured according to

IEC 61439 -3, BS EN 61439 -3, AS/NZ 61439 -3 :2016,

IEC 62208, BS EN 62208 standards

IEC 60529:1989, BS EN 60529 standards

IEC – International Electrotechnical Commission

BS EN - British Standards European Norm

AU/NZS - Australian/New Zealand Standard

Electrical Specifications:

Rated operational voltage (U _e)	415V AC
Rated Insulation voltage (U _i)	1000V AC
Rated frequency	50-60 Hz
Rated current (I _{na})	250A
Circuit rated current (I _{nc})	125A

General Specifications:

Distribution Boards - SEZ

Indoor

Installation:	Indoor
Mounting:	Wall Mounting
Degree of protection:	IP65
Resistance to corrosion:	Severity Test A
Mechanical impact:	IK 08

Material Specifications:

Indoor

Door:	Electro-Galvanized (EG) Steel - 1.0/1.2mm- Powder coated in RAL9010 – fine texture finish
Cabin:	Electro-Galvanized (EG) Steel - 1.0/1.2mm- Powder coated in RAL9010
Door Gasket:	PU (Polyurethane) Form-in-place (FIPG) gaskets by PU gasket robot

Please refer catalog to get material specifications of specific item

Other thicknesses & colors on request.

Paint Specifications:

Type:	Powder coated
Powder:	Epoxy Polyester powder
Powder coating thickness:	60-80 µm
Gloss Level:	Semi-Gloss 50-70%
Texture:	Fine texture
Curing Temperature:	180 °C
Painting system:	Conveyorised automated powder coating process
Pre-treatment process	1: Degreasing/Derusting/Cleaning & Process 2: Water cleansing & Process 3: Phosphating
Pre-heating:	IR (Infra Red) heaters
Powder coating:	Tribo static powder coating system
Curing:	IR (Infra Red) heaters

Technical Specifications

Please refer to the catalog to get the paint specifications of specific items.

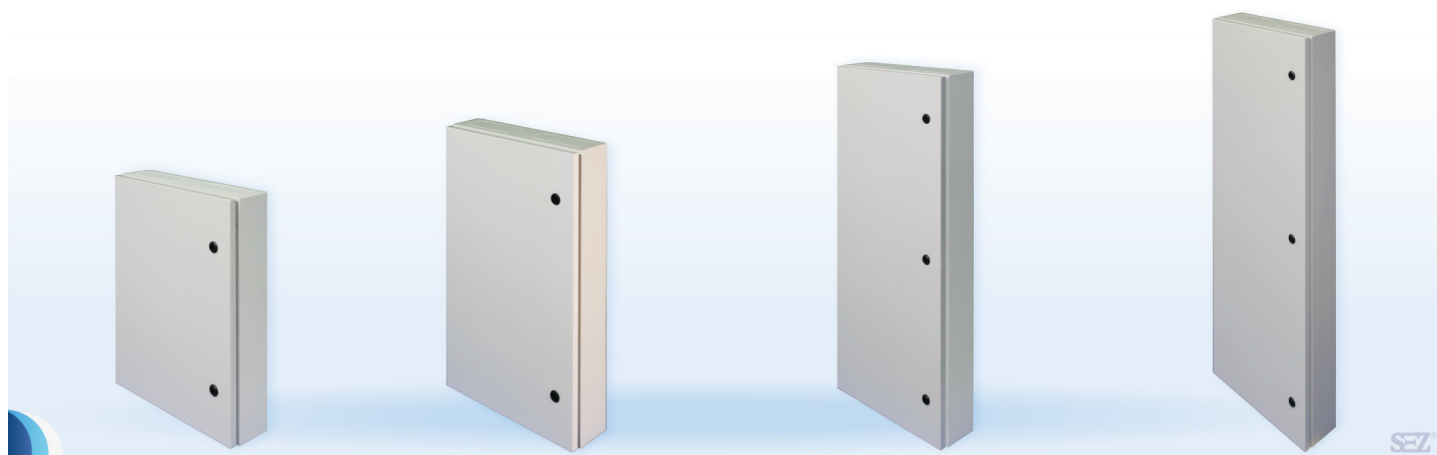
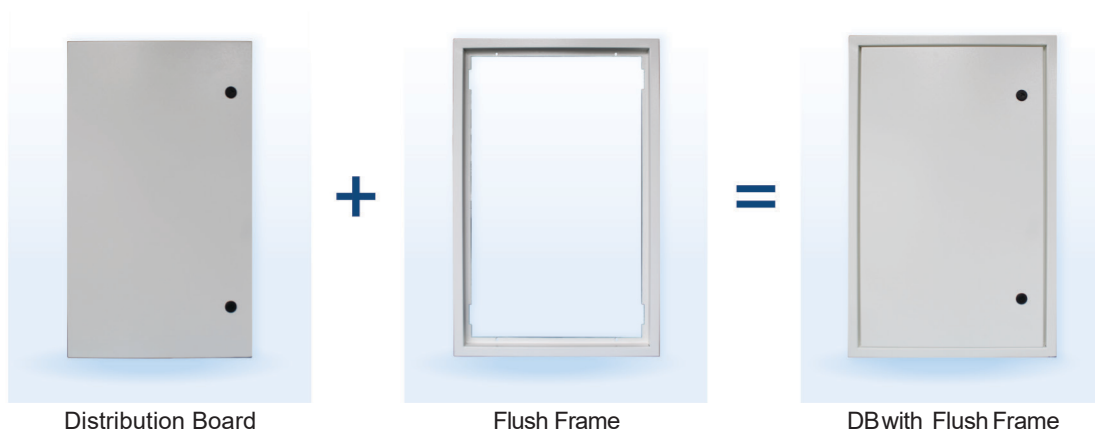


RAL 9010

Products, Designs & Technical Specifications, given in this catalogue may be changed without prior notice.

All design and manufacturing rights reserved.

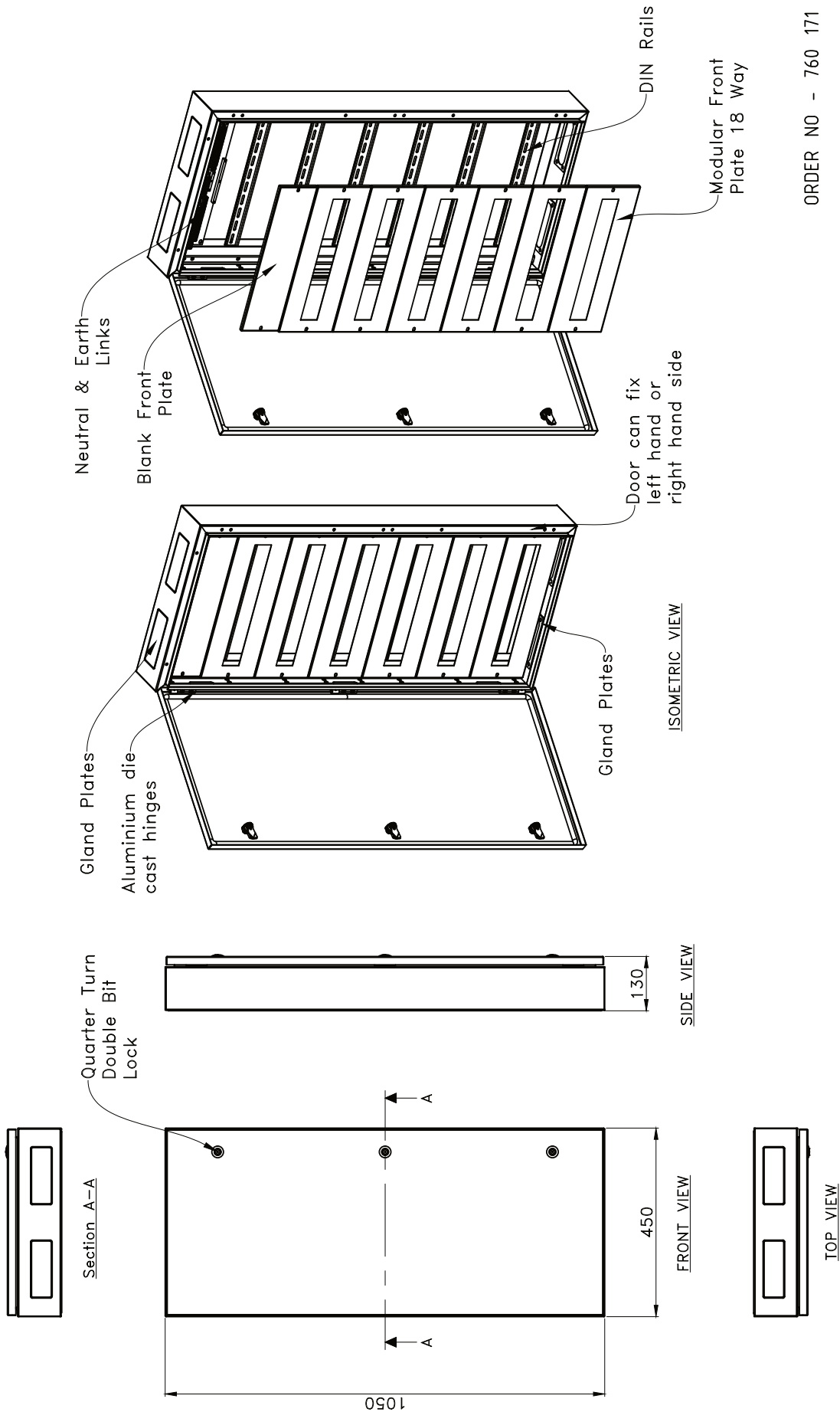
Copyright reserved 2023



Heavy Duty Distribution Board 450 X 1050x 130- 6 Rows X 18Ways

Form/R&D/011

The passing on, as well as the copying, distribution and/or adaption of this document, exploitation and communication of its contents without expressed authorisation is prohibited. Infravention entails liability, especially in the event of a patent, utility model or ornamental design registration.



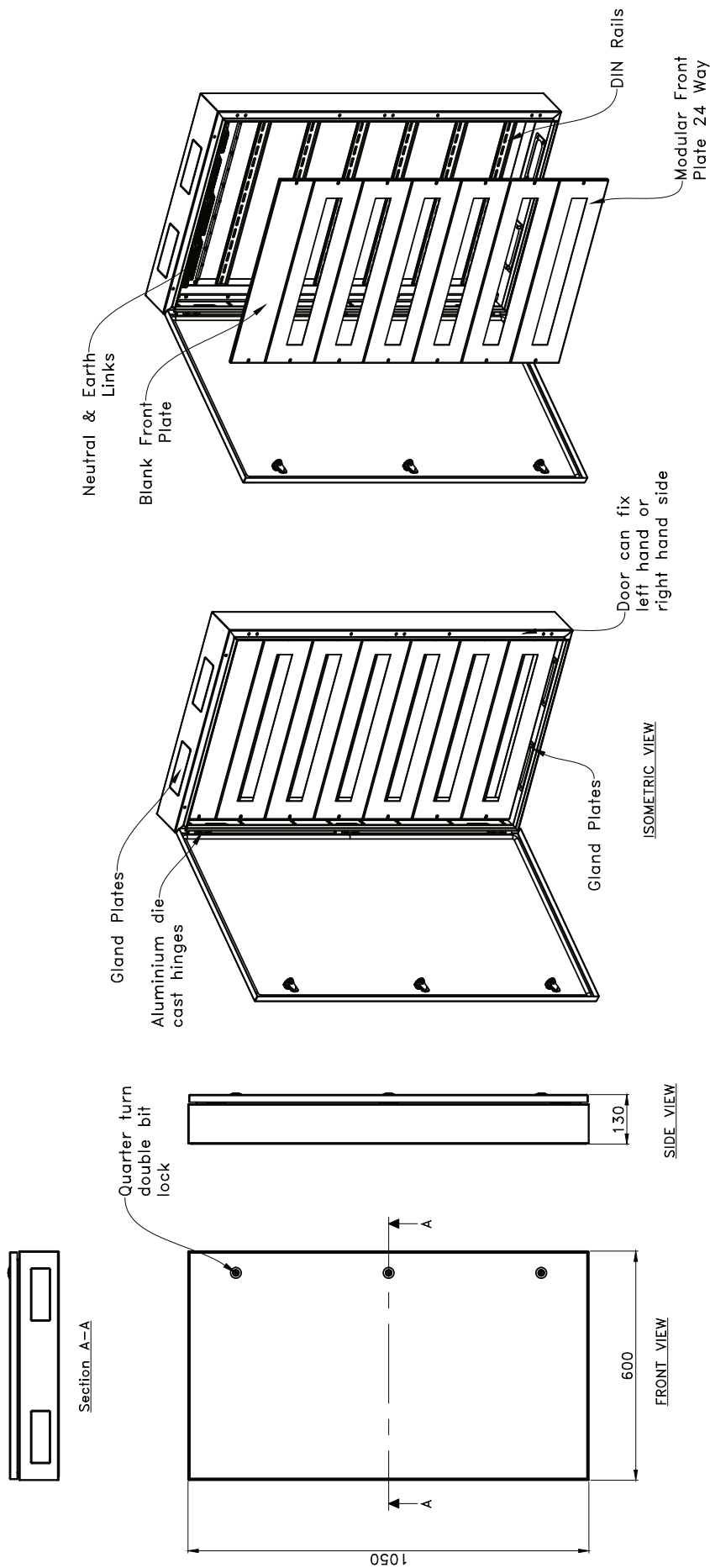
ORDER NO - 760 171

ALL DIMENSIONS IN mm					
<div>SEZ</div>	<div>HEAVY DUTY DISTRIBUTION BOARD</div> <div>450X1050X130 - 6 ROWS X 18 WAYS</div>			Material	- 1.2mm EG Steel
				Finish	- RAL 9010
				Date	- 11-09-2023
				Dwg No	- S23L 105
				Drawn by	Ravindu
		App'd by	Kuruppu		
					

Heavy Duty Distribution Board 600 x 1050x 130- 6 RowsX24 Ways

Form/R&D/011

The passing on, as well as the copying, distribution and/or adaption of this document, exploitation and communication of its contents without expressed authorisation is prohibited. Contravention entails civil and criminal liability. The present document is the property of a patent, utility model or ornamental design registration.



ORDER NO - 760 204

ALL DIMENSIONS IN mm			
<div> <div>SEZ</div> </div>	HEAVY DUTY DISTRIBUTION BOARD 600X1050X130 - 6 ROWS X 24 WAYS		<div> <div>Material</div> <div>Finish</div> <div>Date</div> <div>Dwg No</div> </div> <div> <div>- 1,2mm EG Steel</div> <div>- RAL 9010</div> <div>- 11-09-2023</div> <div>- S23L 106</div> </div>
	Drawn by	Ravindu	
	App'd by	Kuruppu	
			<div> <div> <div></div> <div></div> </div> </div>



SEZ Krompachy a.s.

Hornádska 1
053 42 Krompachy
Slovak republic

Tel: +421 53 4189 144
E-mail: yes@sez-krompachy.sk
Web: www.sez-krompachy.sk

Validity from: 22.11.2024