

Compact power switches K16J, K20J, K25J, K32J a K40J

TECHNICAL SPECIFICATIONS :

Norms	STN EN 60 947-3
Rated insulation voltage U_i (V)	690
Rated impulse voltage (kV)	4
Rated thermal current I_{th} / I_{the} (A)	16, 20, 25, 32, 40
Power in AC-3 at 500 V (kW)	7,5 to 13
Rated operating current I_e (A) in AC-23A-500V~	16, 20, 25, 32, 40
Mechanical durability (cycles)	100 000
Max. Cross-section of connecting wires (mm ²)	16
Fastening	for panel, strip according to STN EN 60715, and on the basis plate with two M4 screws
Coverage	IP20, IP40 from the front of the device IP54 with rubber seal and PH covers
Ambient temperature (°C)	-30 to +55
Switching angle (°)	90

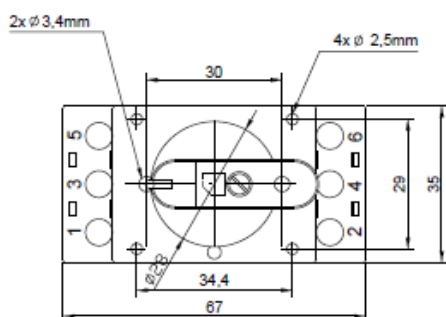
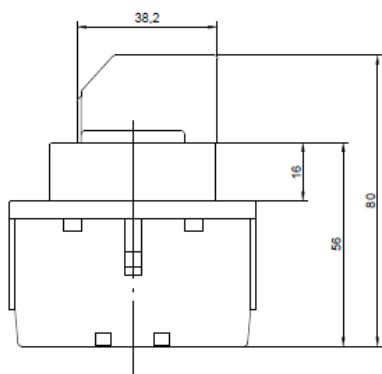
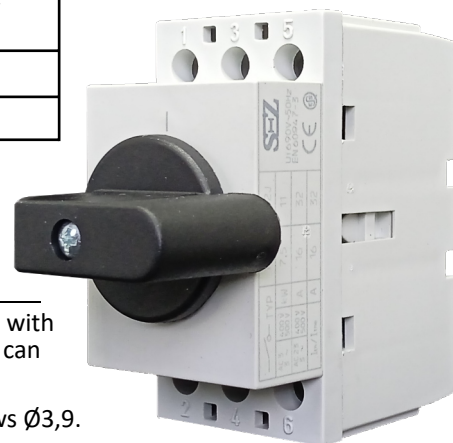
The use :

- 2 to 5 pole switches in categories AC 21, AC 23, and AC 3 (switches for resistive and inductive loads, motors).
- Switches in 3 and 5-wire distributions with PE and N terminals.

Compact power switches K16J, K20J, K25J, K32J and K40J are double-module three-pole switches with a rated current of 16A, 20A, 25A, 32A and 40A and a switching angle of 90 degrees. The switches can be mounted on a DIN rail or on a mounting plate using M4 screws.

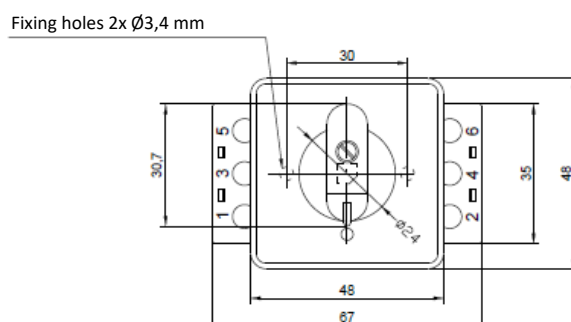
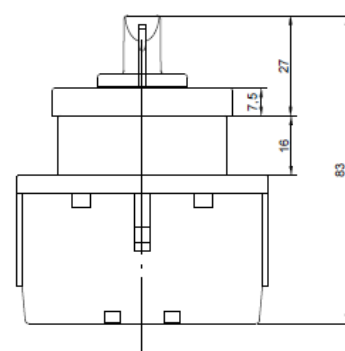
They can also be attached to the front panel of the distribution board with two self-tapping screws $\varnothing 3,9$.

Access to the screw heads for connecting wires is in this case from the back of the switch, with the switch having no rear mounting rail. The basic version of the three-pole switches K16J, K20J, K25J, K32J and K40J can be supplemented with the 4th and 5th switched pole or PE and N poles. These units can be attached to the switches without using screws, either from the left or right side.



K32J

K32JDM



Valid from: 16.05.2025

Krompachy 053 42, Hornádska 585
Slovak Republic

yes@sez-krompachy.sk

+421 53 4189 144